



# COMPANY PROFILE





Lot 89 Coconut Grove  
Shakas Industrial Park  
Shakas Head  
CK No: 2014/189452/07

P.O. Box 143  
UMHLALI  
4390  
Tel: (032) 947 0716  
Fax: (032) 947 0718  
Email: nadia@monoblock.co.za

VAT No: 4130269808

---

## **BACKGROUND**

With the rapid and consistent development on the North Coast of KwaZulu-Natal, the need for a locally based concrete and geotechnical testing laboratory was recognized. As a result of this requirement, Monoblock initially partnered with Contest Laboratory from Pinetown to fulfil this need which was established in 2013. The partnership was subsequently dissolved in 2015 and the operations of the concrete and geotech labs were consolidated to form one company, Monoblock Laboratories.

The laboratory has been successfully servicing the local construction industry for the past three years and is now in the final stages of obtaining SANAS accreditation.

## **VISION STATEMENT**

Our company objective is to:

- To provide a comprehensive, professional and SANAS accredited geotechnical and concrete testing laboratory on the North coast of KwaZulu-Natal.

## **MISSION STATEMENT**

- Ensuring that laboratory personnel are familiar with the requirements of ISO /IEC 17025 as well as the company policies and procedures and that these requirements are implemented and maintained.
- Ensuring that all laboratory personnel remain suitably trained in all aspects relating to testing activities and the requirements of ISO / IEC 17025.
- Ensuring that the customer's testing requirements are understood and effectively communicated within the laboratory in order to provide services in accordance with the established performance standards as well as the expectations of the customer.
- Ensuring that the quality of testing activities and service standards are improved on an ongoing basis.



Lot 89 Coconut Grove  
 Shakas Industrial Park  
 Shakas Head  
 CK No: 2014/189452/07

P.O. Box 143  
 UMHLALI  
 4390  
 Tel: (032) 947 0716  
 Fax: (032) 947 0718  
 Email: nadia@monoblock.co.za

VAT No: 4130269808

## **SERVICES**

Specifically our geotechnical and concrete division currently provides the following services to the local construction industry:

### **Geotechnical Site Investigations:**

We have worked on various investigations, doing geotechnical field work, quality assessment / quality control, laboratory and field results analysis and report writing for projects in Kwa-Zulu Natal. These investigations include housing, industrial and commercial developments.

### **Tests on Soils:**

- Maximum Dry Density and Optimum Moisture Content;
- CBR's;
- Sieve analysis;
- Atterberg limits;
- Hydrometer;
- UCS ( Unconfined Compressive Strength);
- ITS (Indirect Tensile Strength);
- Specific Gravity;
- Dispersion Test; and
- Moisture Content.

### **Tests on Aggregates:**

- Gradings;
- ACV (Aggregate Crushing Value);
- 10% Fact;
- Relative Density;
- LBD, CBD (Loose and Compacted Bulk Density);
- Organic Impurities & Soluble Deleterious Impurities in Fine Aggregates; and



Lot 89 Coconut Grove  
 Shakas Industrial Park  
 Shakas Head  
 CK No: 2014/189452/07

P.O. Box 143  
 UMHLALI  
 4390  
 Tel: (032) 947 0716  
 Fax: (032) 947 0718  
 Email: nadia@monoblock.co.za

VAT No: 4130269808

- 
- Flakiness Index.

**Field Tests:**

- Soil Density – In place Density using Nuclear Gauge;
- DPL (Dynamic Probe Light);
- DCP (Dynamic Cone Penetrometer; and
- Pile Integrity.

**Concrete Laboratory:**

- Material testing;
- Slump testing;
- Concrete cube sampling and testing;
- Brick and Block Testing; and
- Detailed concrete statistical analysis of concrete sampling results.

**Concrete Quality Management:**

Mono Block, in association with colleagues in the industry, has also identified the need for effective quality control measures for on-site concrete batching, specifically in rural areas or on sites where concrete quality may be compromised. Based on this need, a propriety spreadsheet and system of monitoring and predicting concrete strengths at 28 days was developed and successfully used in rural construction sites in KwaZulu-Natal. The benefits of this system are:

- Early warning of potential concrete quality problems which may then be timeously addressed.
- Assistance in optimizing concrete standard deviation and thereby reducing production costs.
- Providing an independent verification of concrete quality for the Client / Engineer.
- Assisting in preserving harmonious on-site relationships.
- Helping all parties deliver concrete to specification, on budget and on time.

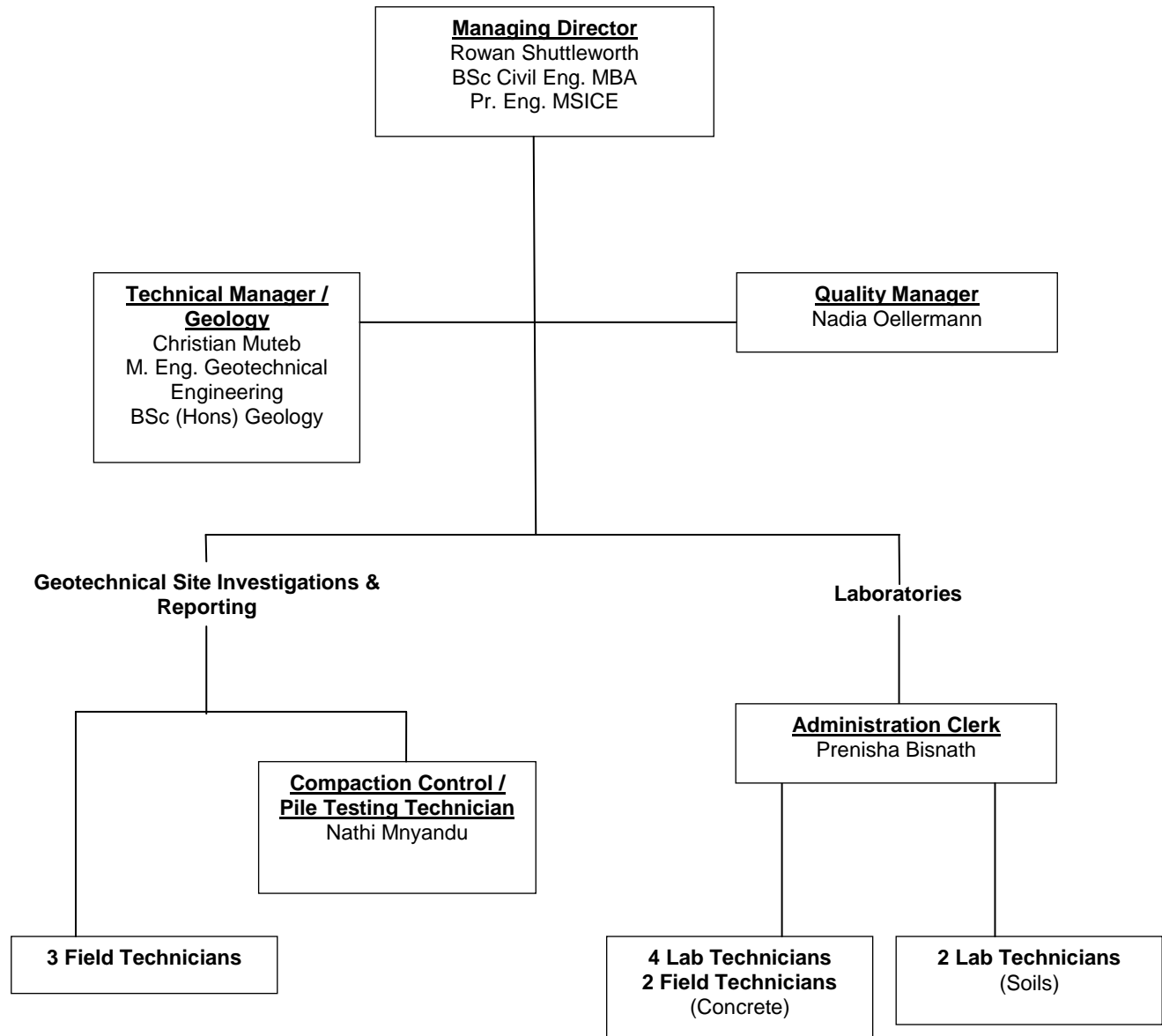


Lot 89 Coconut Grove  
 Shakas Industrial Park  
 Shakas Head  
 CK No: 2014/189452/07

P.O. Box 143  
 UMHLALI  
 4390  
 Tel: (032) 947 0716  
 Fax: (032) 947 0718  
 Email: nadia@monoblock.co.za

VAT No: 4130269808

**LABORATORY TECHNICAL TEAM STRUCTURE**



**PROFESSIONAL AFFILIATIONS**

The Director of the company is professionally registered with the Engineering Council of South Africa (ECSA) and has membership with the South African Institution of Civil Engineers (SAICE).

Christian Muter is a member with the South African Institution of Civil Engineers (SAICE).



Lot 89 Coconut Grove  
Shakas Industrial Park  
Shakas Head  
CK No: 2014/189452/07

P.O. Box 143  
UMHLALI  
4390  
Tel: (032) 947 0716  
Fax: (032) 947 0718  
Email: nadia@monoblock.co.za

VAT No: 4130269808

## **PROFESSIONAL SERVICES**

The company offers thorough geotechnical site investigations; compaction control testing as well as soils and concrete laboratory testing. These are carried out by qualified and experienced employees of the company.

### **Geotechnical Investigations**



- Field work conducted by trained field technicians supervised by qualified engineering geologists.

### **Compaction Control Testing**

- Compaction control testing for layer works, surface beds and platforms conducted by certified technicians.



Lot 89 Coconut Grove  
Shakas Industrial Park  
Shakas Head  
CK No: 2014/189452/07

P.O. Box 143  
UMHLALI  
4390  
Tel: (032) 947 0716  
Fax: (032) 947 0718  
Email: [nadia@monoblock.co.za](mailto:nadia@monoblock.co.za)

VAT No: 4130269808

### Slump Testing



- Field work conducted by trained field technicians supervised by the technical manager.

### Hydrometer Testing

- Hydrometer and soils testing conducted by trained technicians supervised by the technical manager.



### Cube Testing



- Cube strength testing conducted by trained technicians and supervised by the technical manager.



Lot 89 Coconut Grove  
Shakas Industrial Park  
Shakas Head  
CK No: 2014/189452/07

P.O. Box 143  
UMHLALI  
4390  
Tel: (032) 947 0716  
Fax: (032) 947 0718  
Email: nadia@monoblock.co.za

VAT No: 4130269808

### KEY EXPERIENCE OF THE TECHNICAL TEAM

Personnel	Qualifications	Years Exp.	Key Experience	Previous Projects <i>(former &amp; current Employment)</i>
Rowan Shuttleworth	BSc Civil Eng. MBA Pr. Eng. MSICE	>30	<ul style="list-style-type: none"> <li>• Overall management of Mono Block</li> <li>• Civil and structural design</li> <li>• Reports' sign off</li> <li>• Roads – 7 years (Construction 70%, Design 20%, Consultation 10%)</li> <li>• Water, Sanitation &amp; Storm water – 6 years (Design 60%, Project Management 40%)</li> <li>• Steel &amp; Reinforced Concrete Structures – 20 years (Design 40%, Construction 60%)</li> <li>• Development Facilitation – 2 years</li> </ul>	<p><b>Site Engineer:</b></p> <ul style="list-style-type: none"> <li>• Brooks Nek Pass – Transkei</li> <li>• Carragh Lake &amp; Cyclone Repair – Southern KwaZulu Natal</li> <li>• N2 Toll Road – Tongaat River Bridge - Ballito</li> </ul> <p><b>Design Engineer:</b></p> <ul style="list-style-type: none"> <li>• Four story extension – Edendale Hospital</li> <li>• Various small rural road networks and three weigh bridges</li> <li>• Various small rural water networks</li> <li>• Montclair shopping centre extension – Durban</li> <li>• The Atrium – Chaka's Rock</li> <li>• uShaka shopping centre – KwaDukuza</li> <li>• Uitval shopping centre – Ladysmith</li> <li>• Sheffield Manor Estate – Sheffield Beach</li> <li>• Landrover &amp; Ford Dealership – Ballito</li> <li>• Various – Brettenwood Estate – Sheffield</li> <li>• Elaleni Coastal Estate – Chaka's Rock</li> <li>• Polo Pony Retirement Village – Durban</li> <li>• ITB Factory Extension – Isithebe</li> <li>• Valley of the Pools – Zimbali Coastal Estate – Ballito</li> </ul>





Lot 89 Coconut Grove  
Shakas Industrial Park  
Shakas Head  
CK No: 2014/189452/07

P.O. Box 143  
UMHLALI  
4390  
Tel: (032) 947 0716  
Fax: (032) 947 0718  
Email: nadia@monoblock.co.za

VAT No: 4130269808

Personnel	Qualifications	Years Exp.	Key Experience	Previous Projects (former & current Employment)
Christian Muteb	BSc (Hons) Eng. Geology M. Eng. Geotechnical Engineering	7	<ul style="list-style-type: none"> <li>Geotechnical Site Investigations and reporting <i>o Rural Housing, Residential &amp; Commercial Developments</i></li> <li>Materials Investigation</li> <li>Foundation Designs</li> <li>Slope Stability</li> <li>Soil &amp; Core Logging</li> <li>Structural Geology</li> <li>Project Management</li> </ul>	<p><b>Roads/Bridges:</b></p> <ul style="list-style-type: none"> <li>Clan William Dam - Clan William</li> <li>N7 highway - Citrusdal</li> </ul> <p><b>Housing:</b></p> <ul style="list-style-type: none"> <li>Hawson, Stanford &amp; Gansbaai Housing</li> </ul> <p><b>Pipelines:</b></p> <ul style="list-style-type: none"> <li>Water Project - Overstrand</li> </ul> <p><b>Harbor:</b></p> <ul style="list-style-type: none"> <li>Port of Ngqura – Coega (Port Elizabeth)</li> </ul>



Lot 89 Coconut Grove  
Shakas Industrial Park  
Shakas Head  
CK No: 2014/189452/07

P.O. Box 143  
UMHLALI  
4390  
Tel: (032) 947 0716  
Fax: (032) 947 0718  
Email: nadia@monoblock.co.za

VAT No: 4130269808

## RECENT PROJECTS

### GEOTECHNICAL SITE INVESTIGATIONS

- Landrover & Ford Dealership – Ballito – **Construction ID**
- The Atrium – Salt Rock – **Construction ID**
- Snowcon Building – Umhlali – **Snow Cogan**
- uShaka Shopping Centre – **Construction Dynamics**
- The Lakes & Forest Village Phase 3 – Brettenwood Estate – **Hulett Development Company**
- Tahari Development – Salt Rock – **Regency Development**
- Umhlali Country Club Development – **Regency Development**
- Sheffield Manor Development - - Sheffield beach – **North Global Group**
- Uitval Shopping Centre, Ladysmith – **North Global Group**
- Elaleni Development – Sheffield Beach – **North Global Group**
- Gessla Estate, Esenembe - **Nidd Family Trust**
- Montclair Shopping Centre - Durban - **Charles Taylor Architects**
- EVCO Steel Warehouse, Erf 1383 Imbonini Industrial Park - **EVCO Steel Fabrications (Pty) Ltd**
- The New Apostolic Lighthouse Church, Phoenix - **The Apostolic Lighthouse Church**
- 500 plus individual house sites on the North Coast

### COMPACTION CONTROL TESTING

- Madlala Bus Route – Ward 9, Groutville } **(Afrika Group)**
- Malende Access Road – Groutville }
- Woodmead Transport Node, Phase 2 – Shakaskraal } **(McChoc Civils)**
- Laser Junction – Idube Tradeport }
- Lower Tugela Bulk Water Supply Scheme, Mandeni – **Stefanutti Stocks Civils (Pty) Ltd**

### CONCRETE CUBE TESTING

- Lower Tugela Bulk Water Supply Scheme, Mandeni – **Stefanutti Stocks Civils (Pty) Ltd**
- Extension of Ballito Junction Mall, Ballito – **WBHO Construction (Pty) Ltd**
- Avon Power Plant, Esenembe – **Group Five Limited**
- 30 plus construction companies on the North Coast